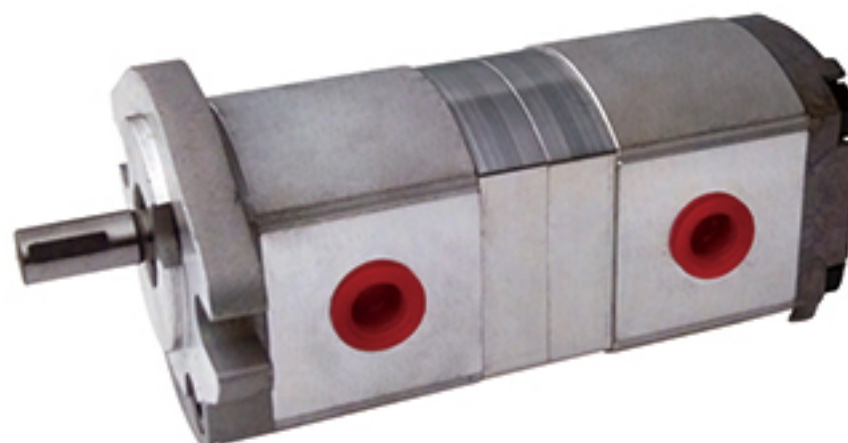
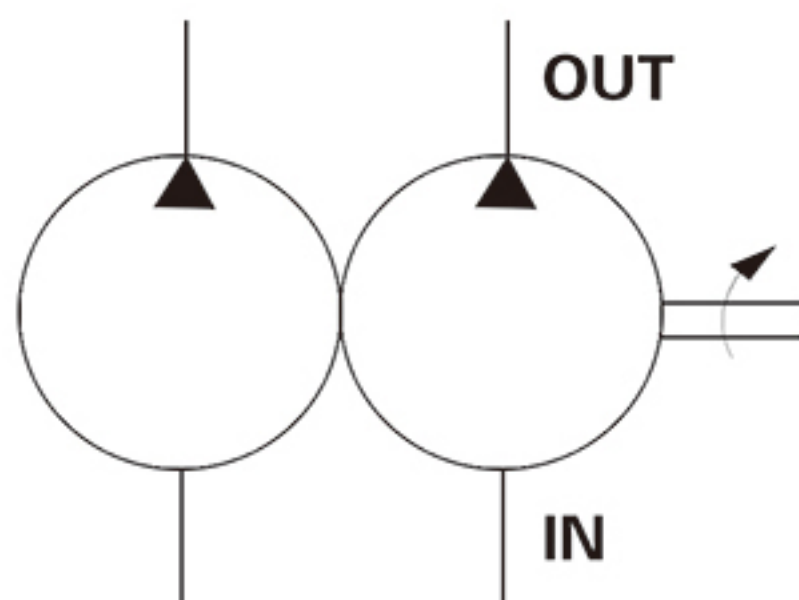


## HGP-11A双联齿轮泵 HGP-11A double gear pump

### ◎ JIS油压符号 JIS oil pressure symbol



### ◎ 特性 Characteristics

1. 高级铝合金本体，无油轴承，Viton油封，适用于高温，高速，高压，高扭力之场合。
  2. 效率高，总效率可达95%以上。
  3. 可与液压电机直接配合，节省空间，简化设计，便于安装及维护。
1. advanced aluminum alloy body, no oil bearing, Viton oil seal, suitable for high temperature, high speed, high pressure, high torque occasions.
2. high efficiency, the total efficiency of more than 95%.
3. can directly cooperate with the hydraulic motor, save space, simplify design, easy installation and maintenance.

### ◎ 型号说明 Model Description

HGP-11A	-F	-19+19	-R	-X	-2B	-10
系列 series	安装型式 Installation type	排油量 Oil discharge cc/rev	旋转方向 Rotation direction	心轴型式 Mandrel type	法兰型式 flange type	设计序号 Design Serial Number
双联齿轮泵 double gear pump	L: 脚座型 L: foot seat type F: 法兰型 F: flanged type	见排量说明 See discharge instructions	R: 顺时针 R: clockwise L: 逆时针 L: counter clockwise	X: 平行键 X: Parallel Keys Y: 梅花键 Y: Plum Blossom key Z: 推拔键 Z: push pull Jian	SAE2 孔式	

特别说明：双联齿轮泵是由两个同规格或不同规格的单联齿轮泵组合而成。

不同排量的齿轮泵可以组合在一起，大泵在轴端。

具体排量请参见单联齿轮泵HGP-1A的规格表。

Special Description: double gear pump is composed of two single gear pumps with the same specifications or different specifications.

The gear pump with different displacement can be assembled together, and the large pump is at the end of the shaft.

For specific displacement, refer to the specification list of single gear pump HGP-1A.

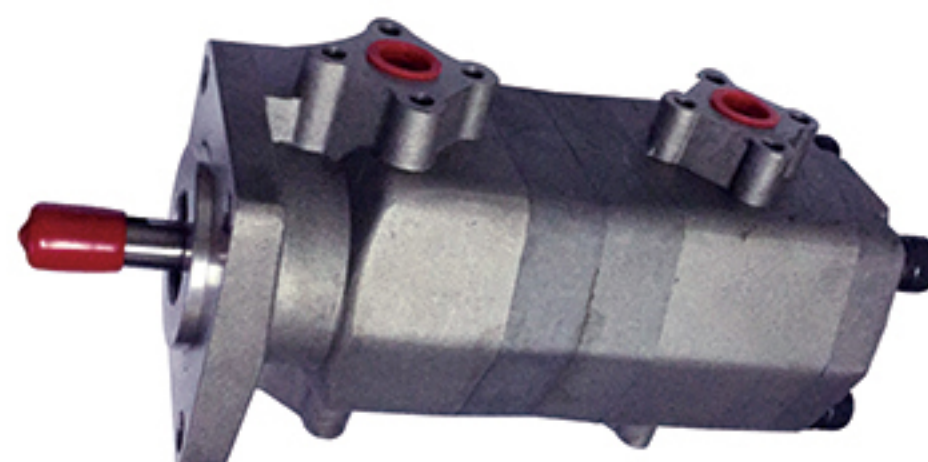
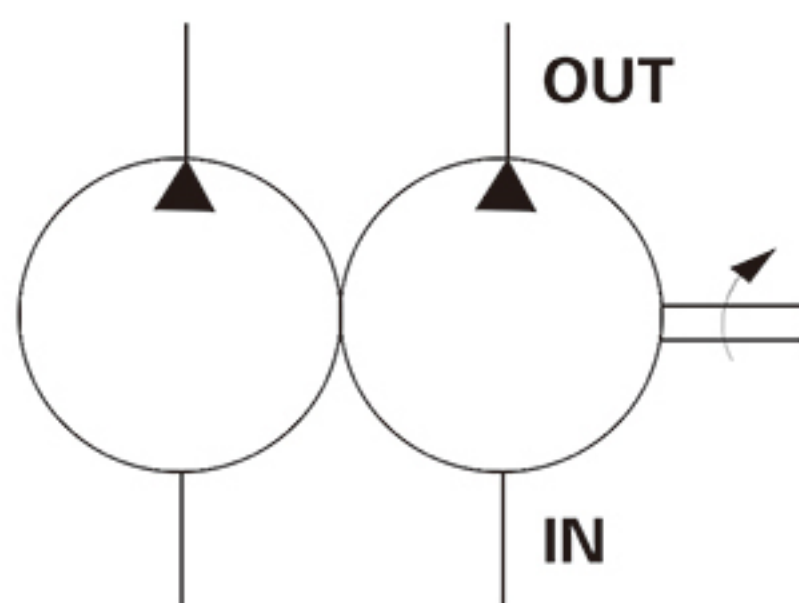






## HGP-22A双联齿轮泵 HGP-22A double gear pump

◎ JIS油压符号 JIS oil pressure symbol



◎ 特性 Characteristics

1. 高级铝合金本体，无油轴承，Viton油封，适用于高温，高速，高压，高扭力之场合。
  2. 效率高，总效率可达95%以上。
  3. 可与液压电机直接配合，节省空间，简化设计，便于安装及维护。
  4. 可与低压变量叶片泵组成高低压泵，合理利用能源。
1. advanced aluminum alloy body, no oil bearing, Viton oil seal, suitable for high temperature, high speed, high pressure, high torque occasions.
2. high efficiency, the total efficiency of more than 95%.
3. can directly cooperate with the hydraulic motor, save space, simplify design, easy installation and maintenance.
4. can be combined with low pressure variable vane pump to form high and low pressure pump. Reasonable use of energy.

◎ 型号说明 Model Description

HGP-22A	-F	-8+8	-R	-X	-4BJ	-10
系列 series	安装型式 Installation type	排油量 Oil discharge cc/rev	旋转方向 Rotation direction	心轴型式 Mandrel type	法兰型式 flange type	设计序号 DesIgn Serial Number
双联齿轮泵 double gear pump	L: 脚座型 L: foot seat type F: 法兰型 F: flanged type	见排量说明 See discharge instructions	R: 顺时针 R: clockwise L: 逆时针 L: counter clockwise	X: 平行键 X: Parallel Keys Y: 梅花键 Y: Plum Blossom key	4BJ:JIS4 孔式	

特别说明：双联齿轮泵是由两个同规格或不同规格的单联齿轮泵组合而成。

不同排量的齿轮泵可以组合在一起，大泵在轴端。

具体排量请参见单联齿轮泵HGP-2A的规格表。

Special Description: double gear pump is composed of two single gear pumps with the same specifications or different specifications.

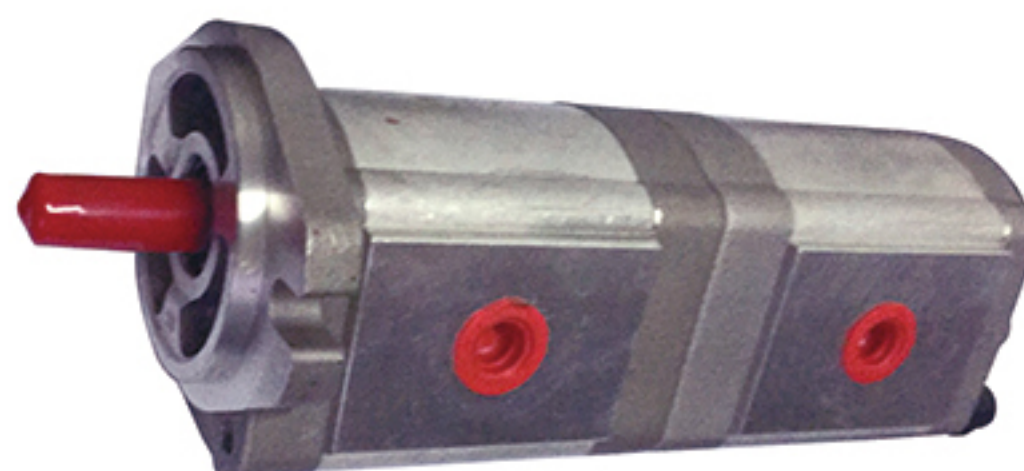
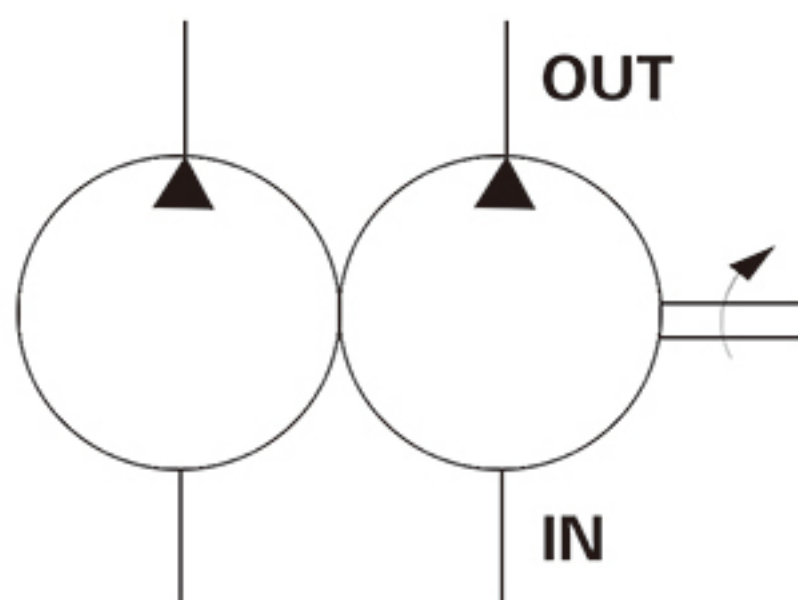
The gear pump with different displacement can be assembled together, and the large pump is at the end of the shaft.

For specific displacement, refer to the specification list of single gear pump HGP-2A.



## HGP-33A双联齿轮泵 HGP-22A double gear pump

### ◎ JIS油压符号 JIS oil pressure symbol



### ◎ 特性 Characteristics

1. 高级铝合金本体，无油轴承，Viton油封，适用于高温，高速，高压，高扭力之场合。
  2. 效率高，总效率可达95%以上。
  3. 可与液压电机直接配合，节省空间，简化设计，便于安装及维护。
1. advanced aluminum alloy body, no oil bearing, Viton oil seal, suitable for high temperature, high speed, high pressure, high torque occasions.
2. high efficiency, the total efficiency of more than 95%.
3. can directly cooperate with the hydraulic motor, save space, simplify design, easy installation and maintenance.

### ◎ 型号说明 Model Description

HGP-33A	-F	-19+19	-R	-X	-2B	-10
系列 series	安装型式 Installation type	排油量 Oil discharge cc/rev	旋转方向 Rotation direction	心轴型式 Mandrel type	法兰型式 flange type	设计序号 DesIgn Serial Number
双联齿轮泵 double gear pump	L: 脚座型 L: foot seat type F: 法兰型 F: flanged type	见排量说明 See discharge instructions	R: 顺时针 R: clockwise L: 逆时针 L: counter clockwise	X: 平行键 X: Parallel Keys Y: 梅花键 Y: Plum Blossom key Z: 推拔键 Z: push pull Jian	2B:SAE2 孔式 4BD:DIN4 孔式	

特别说明：双联齿轮泵是由两个同规格或不同规格的单联齿轮泵组合而成。

不同排量的齿轮泵可以组合在一起，大泵在轴端。

具体排量请参见单联齿轮泵HGP-3A的规格表。

Special Description: double gear pump is composed of two single gear pumps with the same specifications or different specifications.

The gear pump with different displacement can be assembled together, and the large pump is at the end of the shaft.

For specific displacement, refer to the specification list of single gear pump HGP-3A.

### ◎ 规格 Specification

产品型号 Product model	A1/A2	B1/B2	产品型号 Product model	A1/A2	B1/B2
HGP-33A-*4+4*	45.8	93	HGP-33A-*19+19*	58.3	118
HGP-33A-*6+6*	47.3	96	HGP-33A-*23+23*	61.8	125
HGP-33A-*8+8*	48.8	99	HGP-33A-*25+25*	63.3	128
HGP-33A-*11+11*	51.3	104	HGP-33A-*28+28*	65.3	132
HGP-33A-*13+13*	53.3	107	HGP-33A-*30+30*	67.3	136
HGP-33A-*17+17*	56.3	114			